

2023
—
2033

SUSTAINABILITY STRATEGY



Clarence...
a brighter place



We pay our respects to the Mumirimina people as the traditional and original custodians of the land, and acknowledge the continuing connection of the Tasmanian Aboriginal people to the skies, land and waterways. We pay respect to Elders past and present.

CONTENTS

1	Relationship to our strategic plan Our purpose, mission, vision and goals Our strategies Our role in sustainability	17	Priority 1 Sustainable cities and communities
6	Our sustainability vision Clarence... strengthening the integration of sustainability practices into our services and operations	19	Priority 2 Responsible consumption and production
9	Overview Consultation and feedback Background	21	Priority 3 Climate action
12	Where do we want to be in 10 years? Key outcomes we will work to achieve by 2033 Who will we engage with? How will we get there?	23	Priority 4 Life on land
		25	Priority 5 Clean water and sanitation
		27	Priority 6 Industry, innovation and infrastructure

RELATIONSHIP TO OUR STRATEGIC PLAN

Our purpose

To provide for the health, safety and welfare of the community

To represent the interests of the community

To provide for the peace, order and good governance of the municipal area

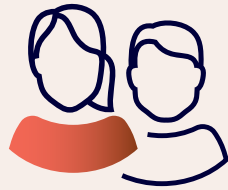
Our mission

To respond to the needs of the community through a commitment to excellence in leadership, advocacy, best practice governance and service delivery

Our vision

Clarence... a vibrant, prosperous, sustainable city

OUR GOALS



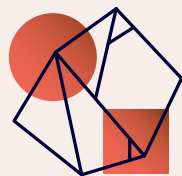
A people friendly city

Clarence values diversity and encourages equity, inclusiveness and accessibility. We aspire to create high quality public places for all people to live actively, engage socially and enhance our health and wellbeing.



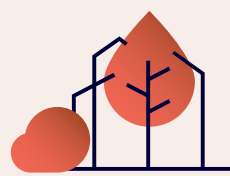
A well-planned liveable city

Clarence will be a well-planned liveable city with services and infrastructure to meet current and future needs of our growing and vibrant community.



A prosperous and creative city

Clarence encourages creativity, innovation and enterprise and will develop the local economy by enabling opportunities for all people.



An environmentally responsible city

Clarence is environmentally responsible, valuing and protecting the natural environment for a sustainable and liveable future.

Governance and leadership

We seek to act with the highest ethical standards and foster trusting and respectful relationships, demonstrating leadership and accountable transparent governance of the city. Good governance promotes public trust, leads to informed and ethical decision-making, and improves efficacy.

Assets and resources

We will efficiently and effectively manage financial, human and property resources to attain our strategic goals and meet statutory obligations.



SUSTAINABLE DEVELOPMENT GOALS



Clarence City Council supports the United Nations Sustainable Development Goals. This Strategy links to six of the United Nations Development Goals - applying them in a local context but within the framework of international sustainability practices.



Council's growing fleet of hybrid and electric vehicles.

Our strategies

This Sustainability Strategy is one of seven key strategies adopted by council to support achievement of our Strategic Plan 2021-2031.

While each strategy stands alone, many goals and their supporting objectives overlap. To achieve the best outcomes for our community, we will take a whole of council approach to align planning, resources and delivery, particularly where goals and objectives have connections with other key strategies. Where outcomes have synergies across multiple strategies, objectives to achieve the outcomes are included in the strategy with the best fit.

This strategy outlines how we will work towards achieving sustainability through balancing social, environmental and economic factors.

The strategy establishes six priority areas adopted from the United Nations Sustainable Development Goals.

- 1. Sustainable cities and communities** – make our city inclusive, safe, resilient and sustainable.
- 2. Responsible consumption and production** – support sustainable consumption and production patterns.
- 3. Climate action** – take action to combat climate change and its impacts.
- 4. Life on land** – sustainably manage our environment and minimise biodiversity loss.
- 5. Clean water and sanitation** – ensure access to clean water and sanitation.
- 6. Industry, innovation and infrastructure** – build resilient infrastructure, promote inclusive and sustainable industry and foster innovation.

Our role in sustainability

Improving sustainable practices supports and promotes the health, safety and welfare of our communities and is a responsibility that falls to all tiers of government. It also involves many other sectors: private enterprise, not-for-profit organisations and communities themselves.

The way in which council approaches this will depend on the urgency and impact of the issue, the objective it relates to, who else has a key role and available resources. We will work respectfully with others and make sure we don't duplicate efforts.

In implementing sustainable practices council will choose from one or more of the following roles:

Delivering

planning and delivery of actions that support a sustainable city.

Partnering

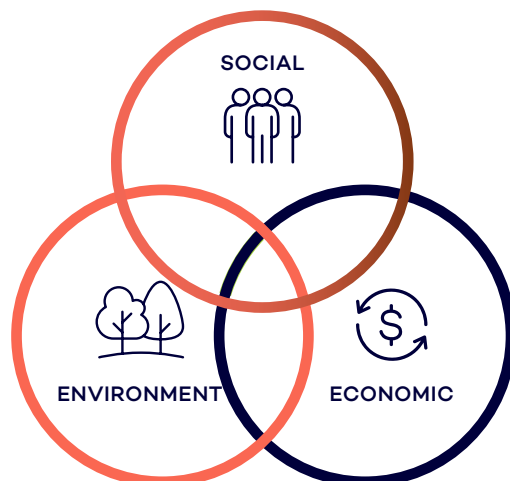
with relevant stakeholders to deliver outcomes that support a sustainable city.

Facilitating

providing key engagement connections and planning to improve attainment of actions that support a sustainable city.

Advocating

for stakeholders to be heard and promoting actions that support a sustainable city.



Sustainability:
meeting the needs of
the present without
compromising
the ability of future
generations to meet
their own needs.



Bellerive Pier

OUR SUSTAINABILITY VISION

Clarence...

Strengthening the integration of sustainability practices into our services and operations

What do we mean by sustainability?

In 1987, the United Nations Brundtland Commission defined sustainability as “meeting the needs of the present without compromising the ability of future generations to meet their own needs”.

The three pillars of sustainability are:

- the economy
- society, and
- the environment.

Integrating sustainability

Council has an important role to play in leading, driving and integrating sustainable practices through our operations, service delivery and community engagements, including:

- planning urban areas and transport
- managing stormwater and waste
- adapting to a changing climate
- developing and educating the community
- managing natural areas, and
- demonstrating good corporate citizenship.

Council has already implemented several key sustainability practices into its operations however this is our first high level strategic document to focus on sustainability.

Sustainability has a very broad scope. This strategy forms the foundation of sustainable practices within council’s role, responsibility or influence that will build with time and experience. Some sustainability objectives are documented in other strategies where they represent a better fit with actions and outcomes.

State Government Strategic Plans and Strategies

Council recognises that the practice of sustainability does not occur in isolation, it interacts with or has connections to other stakeholders, places and objectives. There is a range of sustainability related State government legislation, policies and strategies that influence how council leads, supports and enables change. In working towards our objectives, we will seek to align effort where appropriate to provide a consistent and robust approach to a sustainable future.

Planning urban areas and transport

Council plays a significant role in land use planning; building sustainable communities that make effective use of our existing infrastructure and promoting effective and efficient transport choices.

In planning for sustainability, we seek to ensure that meeting increasing infrastructure demand does not come at the cost of our existing natural resources, including our open spaces, agriculture industry, natural environment and waterways.

Managing stormwater and waste

Minimising the impacts of stormwater runoff, including environmental and social impacts of flooding and degrading water quality, is a key responsibility of council.

Working towards being a sustainable city also requires a focus on managing waste that prioritises prevention, reduction, re-use and recycling. We have the capacity to impact this area through our role as a stakeholder in the landfill at Copping and as a significant purchasing entity.

Adapting to a changing climate

A key aspect of providing for a sustainable future is strengthening our resilience and capacity to adapt to climate-related hazards and natural disasters. The knowledge we have at a local level enables council to identify where we are most vulnerable and influences our ability to address climate risks. Additionally, there are actions we can take at an organisational level to minimise our own contribution to greenhouse gas emissions.

Developing and educating our community

Balancing environmental, social and economic considerations is important to improve the quality of life for our community. Supporting our community to understand the value of our natural areas and the risks and opportunities presented by a changing climate is critical in mitigating and adapting to these impacts.

Managing natural areas

Council has a responsibility to facilitate sustainable and productive management of our natural resources to minimise and prevent, where possible, land degradation and biodiversity loss. Growing our city in a way that values natural resources and the environment for future generations is key to achieving a sustainable city.

The photo shows a changing shoreline at Roches Beach over the period 1957 to 2022.



Good corporate citizenship

Recognising our corporate citizenship responsibilities to our community, we will demonstrate leadership by continuing to integrate social, environmental and economic values, and other sustainable practices in our decision-making processes and operations. Our capacity to integrate sustainable practices must also consider our financial sustainability and economic responsibilities.

By taking a leadership role, engaging with our community and investing in sustainable technology and practices, we aim to support our community in providing for a sustainable future.



OVERVIEW



Consultation and feedback

Further to the community's contribution to the Strategic Plan 2021-2031, direct feedback and contributions from several sources have been considered specifically in the development of this Sustainability Strategy. Workshops were conducted with councillors and staff. Representatives from Special Committees of council were also consulted.

To build on these contributions, recent feedback about this strategy was sought from our community through our "Your Say" internet platform.

Developing sustainable practices in consultation with, and inclusive of, our community builds shared knowledge and encourages successful implementation and the practice of sustainability.

Background

While the focus of this strategy is on what we will do over the next ten years, it is also important to recognise our achievements to date to build a sustainable future. The following are a few examples of sustainable practices already in place across council and the city.

Managing natural areas

We have developed and implemented over twenty reserve activity plans. These plans outline a detailed and prioritised program to manage our natural areas to conserve and enhance habitat, biodiversity and amenity values.

Managing climate change impacts

Our city features more than 191km of coastline. Since 2008, extensive consultative projects have occurred in response to concerns about erosion of beaches and flooding events in coastal areas. Council monitors beach erosion and coastal changes closely and our planning processes include consideration of coastal hazards and impacts.

Reducing greenhouse gas emissions

Council plugged into Tasmania's expanding electric highway with the installation of a public charging station for electric vehicles in 2021. This is a great addition to our city and will encourage more people to get on board with new and emerging technologies.

Council has also acted to significantly reduce greenhouse gas emissions across the city. Residential street lighting has been upgraded with 2,158 energy efficient LED lights installed, resulting in energy, carbon emission and cost savings. A further 1,436 lights will be upgraded in Stage 2 of the project. Our greenhouse gas emissions resulting from this upgrade are predicted to reduce by 4,022 tonnes over the next 20 years.

Sustainable recreation

Council's celebrated Tangara Trail offers 250km of recreational opportunity for healthy, carbon friendly bike, horse and foot travel. Popular with residents and visitors alike, the trail through bush, coast and country is integral to the liveability and sustainability of our city.



Linesman installing LED streetlights in Clarence.

Flood mapping

Council has produced flood maps that show urban areas that have the potential to be affected by flooding. The maps can be searched by area or address and show the potential extent and depth of flooding.

The maps include an allowance for the more intense rainfall events predicted to 2100 due to a changing climate. Flood mapping helps council and our community understand the risks and prepare suitable responses, which is part of building a more sustainable future.



Facilitating community involvement and education

Building a sustainable future is supported by facilitation and encouragement of community awareness and participation in protection and maintenance of our natural areas.

Our volunteers have a significant impact on achieving our strategic goals and the delivery of a range of services and initiatives, including the significant work of our landcare and

coastcare groups in maintaining our natural areas. Group activities include traditional weeding and planting as well as partnering with other organisations to engage the broader community via interpretation and education about natural and cultural values.



WHERE DO WE WANT TO BE IN 10 YEARS?

Key outcomes we will work to achieve by 2033

Outlined below are the outcomes council will work to achieve by 2033. The outcomes will result from implementing the objectives outlined under each Priority Area.

Transparent governance

- Identify baseline data to monitor effectiveness and impact of objectives outlined in this strategy

Sustainable cities and communities

- The urban tree canopy has increased to reduce urban heating
- Council's buildings and infrastructure demonstrate improved energy efficiency
- Council and its community continue to improve planning for and responding to disasters
- Electric vehicles have been integrated into council's fleet
- Increased use of active transport
- Land use planning principles are more inclusive of sustainable practices

Responsible consumption and production

- Prevention, reduction, recycling and reuse has reduced the amount of waste disposed to landfill
- Council has an effective waste strategy in place
- Sustainability criteria are embedded into council's procurement and tender processes
- Sustainable procurement practices are actively promoted and encouraged
- Our community is aware of sustainable development and lifestyles

Climate action

- Our resilience to climate-related hazards and natural disasters has improved
- Climate change measures and goals have been integrated into council policies, strategies and planning
- Institutional capacity on mitigating and adapting to a changing climate has improved
- Greenhouse gas emissions have been reduced to complement the net zero emission ambitions of the state and federal governments

Life on land

- Our open space network has increased
- The conservation, restoration and sustainable use of land and inland freshwater ecosystems is a clear priority
- Degradation of natural habitats and the loss of biodiversity have reduced
- Ecosystem and biodiversity values in local planning and development processes have improved
- Expansion of sustainable agriculture industry has been fostered

Clean water and sanitation

- The way we use water in our operations is more efficient
- Water quality has improved by reducing untreated wastewater, improving the quality of stormwater discharge and minimising the discharge of pollutants into our environment
- Increased safe reuse of water
- Increased safety of recreational water used for primary contact

Industry, innovation and infrastructure

- Energy, carbon, water and waste are key design considerations in council operations and projects
- Emerging technologies have improved the efficiency of city infrastructure and services
- Sustainability information is integrated into council's reporting processes
- The adoption of clean, resource efficient and environmentally sound technologies and industrial processes has increased

Who will we engage with?

In delivering the objectives outlined in this strategy we will engage with:

Our community

Internal stakeholders

Council special committees

Tasmanian Aboriginal People

Local and regional bodies

State and Federal government



IMPLEMENTATION PLANS

3-5 year lifecycle

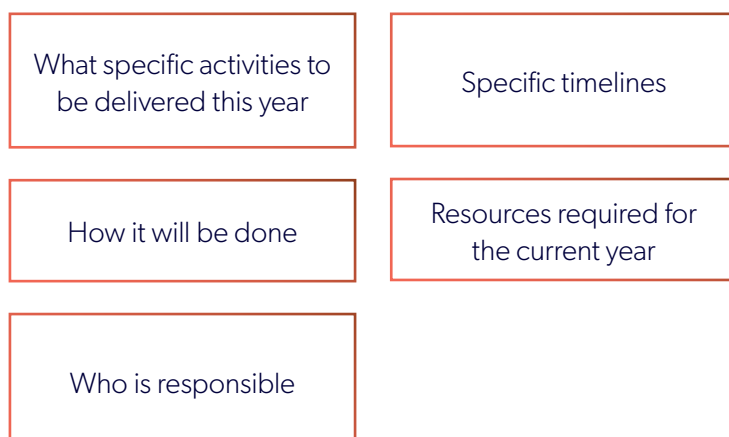
Provides an outline for achieving outcomes from council's strategies, highlighting inter-relationships of activities across council strategies and including statutory responsibilities and reporting requirements.



ANNUAL PLAN

1 year lifecycle

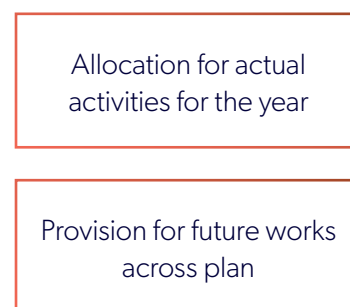
Provides a detailed outline for achieving Plan outcomes across the immediate financial year.



BUDGET

1 year lifecycle

Allocation based on resources required to deliver outcomes in the relevant plan.



How will we get there?

Implementation plans will be developed that outline how and when each objective will be delivered. Relevant activities from existing planning documents and other implementation plans will be mapped against the objectives of this strategy to ensure that our efforts are coordinated, rigorous and do not duplicate effort or resources.

Complementary objectives across council's strategies will be delivered in a collaborative manner.

In developing implementation plans, we will identify baseline data and develop key performance indicators (KPIs) to improve transparency and governance of outcomes delivered. In developing KPIs we will consult with relevant stakeholders including council's special committees and members of our community.

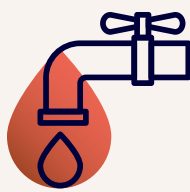
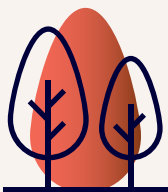
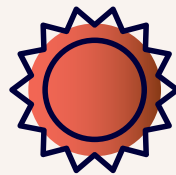
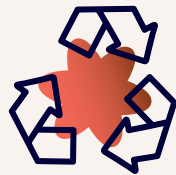
Implementation plans will provide for a major review of progress every 3 years, and an annual minor review to inform budget and annual plan discussions and decision-making.



WHAT WILL WE DO TO INTEGRATE SUSTAINABLE PRACTICES INTO OUR SERVICES AND OPERATIONS OVER THE NEXT 10 YEARS?

The following pages set out the objectives we will pursue over the next ten years.

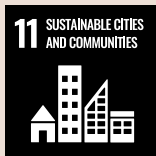
Council will support sustainable practices by delivering, partnering, facilitating or advocating as appropriate to achieve the objectives.



PRIORITY ONE

SUSTAINABLE CITIES AND COMMUNITIES

To make our city inclusive, safe, resilient and sustainable



Why is this important?

Sustainability helps to provide for intergenerational equity in access to resources and assets. Key elements that impact providing for a sustainable city include:

Sustainable transport

Reducing traffic congestion, demand on parking and reducing carbon and air pollutant emissions are benefits of choosing active and sustainable transport. Options for sustainable transport include public transport, ride sharing, electric vehicles or other low emissions vehicles and electric scooters and bikes. Walking, cycling and other active transport modes provide many benefits for the health of both our community and the city.

Urban heating and cooling

Urban heat islands occur when the natural environment is replaced with roads, pavements and buildings which absorb and retain heat. This causes temperatures in these areas to be higher than vegetated areas.

Heat impacts our community and natural areas in many ways, including increased cost for cooling our homes and increased heat related stress symptoms. Our green spaces, shady trees and recreational areas mitigate urban heating and help people cool down on hot days.

Heat impacts our community and natural areas in many ways.

Disaster management

The frequency, duration and intensity of disaster events is increasing in a warming climate. These events can cause significant environmental, economic and social impacts and consequences. Coupled with population growth and urban development, the risks associated with these events are increasing. It is important we work to build community resilience with effective and efficient adaptation and response mechanisms.

Objectives we will work towards

Urban heating and cooling

- Improve liveability by identifying and implementing opportunities to cool the city and protect people and communities from heat stress
- Advocate for home and landscape designs that promote efficient use of energy
- Increase our urban forests and the tree canopy
- Take opportunities to decrease urban heating in council's design projects

Disaster management

- Develop quality, reliable, sustainable and resilient infrastructure
- Support our community to build capacity and resilience

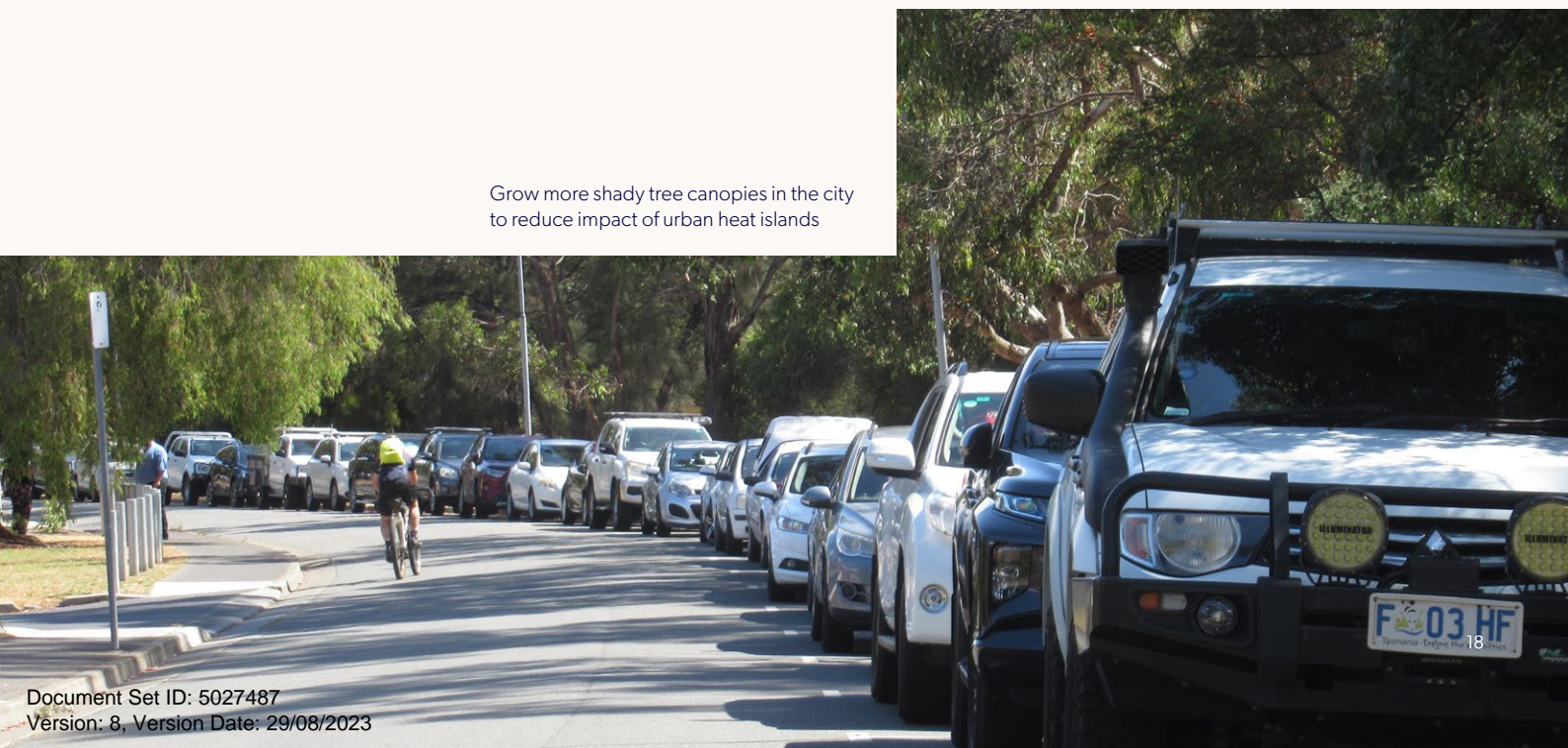
Sustainable transport

- Provide infrastructure to support sustainable transport options
- Encourage and support our community to take up sustainable transport options
- Reduce the environmental, economic and social impact of council's fleet vehicles, including integrating electric vehicles into our fleet
- Promote the health and well-being benefits of active transport choices
- Encourage the transformation of the transport sector to low or zero carbon emissions transport

Sustainable communities

- Undertake best practice land use policy development and strategic planning to provide for sustainable development and improve the liveability of our communities
- Share lessons learnt with our community to build understanding of sustainable practices
- Advocate for the state planning scheme to provide for increased consideration of sustainability criteria, including biodiversity and stormwater

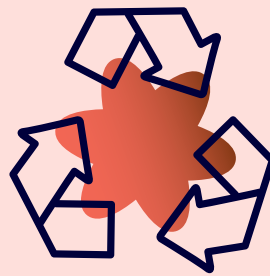
Grow more shady tree canopies in the city to reduce impact of urban heat islands



PRIORITY TWO

RESPONSIBLE CONSUMPTION AND PRODUCTION

To support sustainable
consumption and
production patterns



Why is this important?

Minimising waste and recovering resources

One of our key responsibilities is to deliver waste and recycling services. We provide this service as kerbside recycling and waste collection. Relying on landfill disposal as the primary solution to waste management has a significant environmental impact.

Council also has a key role to support the state government's waste strategy which promotes the diversion of waste from landfill to recover and recycle waste streams, wherever possible.

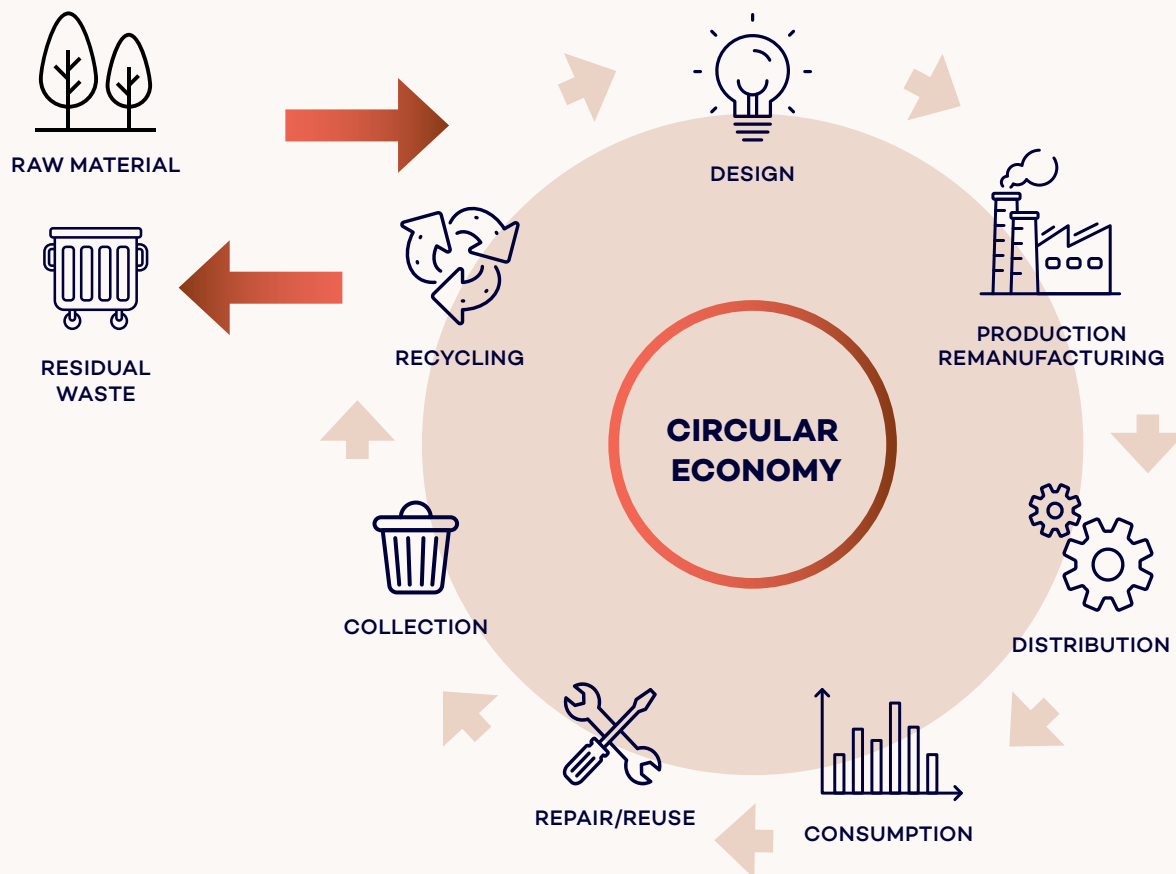
Where appropriate, we will align our corporate waste strategy with the state government's to harness synergies and deliver best outcomes to our community.

Responsible consumption and production leads to a circular economy and facilitates local recycling and manufacturing industries.

A circular economy aims to retain the value of materials for as long as possible; recycling, redesigning and reusing materials to minimise the depletion of our natural resources.

In working towards a circular economy, new industry and manufacturing processes can be established that support the use of recycled materials and innovations in developing products. This also provides local employment opportunities and less transport emissions generated in moving materials for processing.





Sustainable procurement

Another aspect of consumption and production is procurement. Sustainable procurement integrates economic, environmental and social considerations into the specifications and evaluation criteria in the procurement process.

Sustainable procurement aims to reduce the adverse impacts of materials use on human health and the natural environment, minimising resource consumption and waste where possible.

Objectives we will work towards

Minimising waste and recovering resources

- Review our waste management strategy to align with objectives and principles of this strategy and reflect key elements of the state government's waste strategy
- Continue to deliver efficient waste and recycling to our residential and business community

- Reduce the generation of waste in our operations and maximise opportunities for resource recovery
- Introduce a food organics garden organics service
- Work with other groups and stakeholders to improve market development and assist emerging resource recovery markets
- Expand community engagement to improve waste avoidance, recovery and reuse practices
- Model sustainable practices in council events and interactions to support community education and adoption

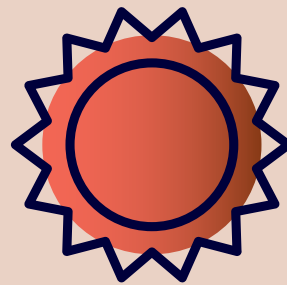
Sustainable procurement

- Embed sustainability as a criteria in tender and procurement processes to promote use of sustainable materials and practices in the city and within council's operations

PRIORITY THREE

CLIMATE ACTION

To take action to combat climate change and its impacts



Why is this important?

Energy and carbon reduction

Reducing greenhouse gas emissions is a key climate action to minimise global heating. The Paris Agreement,¹ which Australia is party to, came into force in 2016 and aims to strengthen the global response to the threat of climate change by:

- holding the increase in the global average temperature to well below 2°C above pre-industrial levels, and
- pursuing efforts to limit temperature increase to 1.5°C.

Tasmania's electricity primarily comes from renewable hydro power which has low emissions. Our state also has extensive forests that absorb greenhouse gas emissions.

These natural advantages, along with government and community climate actions, have led to our state achieving net zero greenhouse gas emissions most years since 2013.

Tasmania is leading Australia's transition to a low carbon economy. While our forests are a key factor in this achievement, we cannot rely solely on our 'green state' to absorb emissions due to risk of fire and resource harvesting.

Taking action to reduce emissions in all carbon producing sectors will allow transition to a low carbon future that meets national and local needs while managing costs and risks.

We will ensure that we implement actions to reduce our emissions to support state, national and international commitments. In doing so it will be important to identify reliable data to establish emission performance statistics and to set emission reduction targets that complement the net zero emission ambitions of the state and federal governments.

¹ Paris Agreement, United Nations 2015 https://unfccc.int/sites/default/files/english_paris_agreement.pdf

Adapting to a warming climate

As our climate heats up, so too will the frequency, duration and intensity of disaster events. These events have significant environmental, economic and social impacts including damage to homes, personal injury, higher insurance premiums, loss of livelihoods and increased pressure on emergency resources.

Coupled with population growth and urban development, the risks associated with climate change events will increase, therefore it is important that we work to improve community resilience with effective and efficient adaptation and response mechanisms put in place.

There is also the opportunity for council to invest in low carbon infrastructure such as electric vehicles and charging infrastructure and buildings with high levels of energy efficiency.

Climate risk management

Our warming climate is a significant issue for local government as we are already realising increased legal, social, economic and environmental impacts.

We are building infrastructure and environments for our future and the impact of our decisions about energy, infrastructure, buildings, transport and waste will span generations.

Objectives we will work towards

Energy and carbon reduction

- Continue to monitor council's and our community's greenhouse gas emissions
- Expand community and organisational engagement to encourage energy conservation and sustainable use of resources
- Set a carbon target for the organisation that will quantify the greenhouse gas emission reductions we are aiming for
- Reduce our greenhouse gas emissions to complement the net zero emission ambitions of the state and federal governments

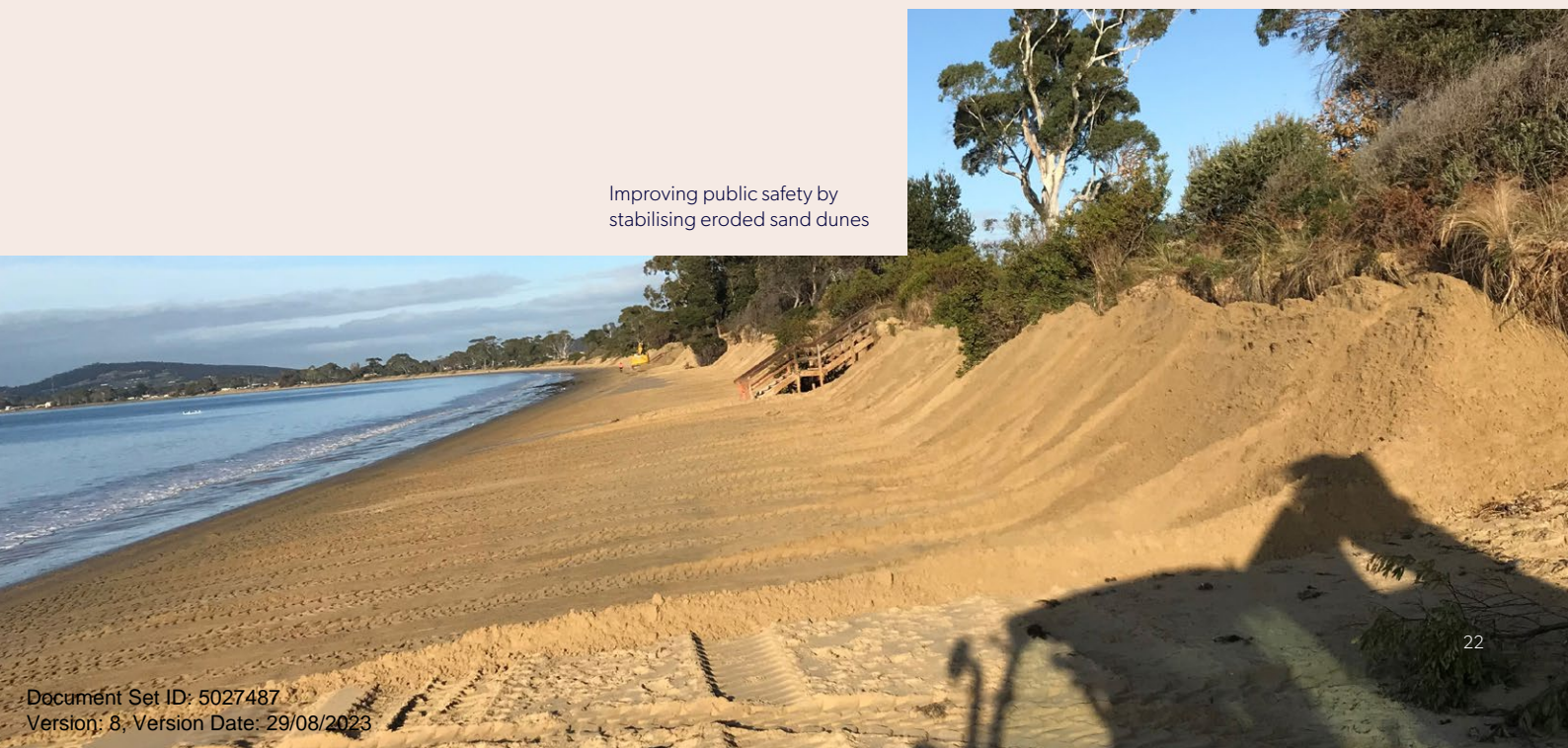
Adapting to a warming climate

- Continue to identify and implement climate change adaptation methods to address impacts on our coastline resulting from sea level rise

Climate risk management

- Enhance our risk assessment processes in relation to the warming climate
- Quantify climate risks outlined in council's corporate risk register and risk management framework

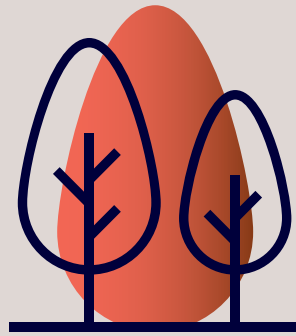
Improving public safety by stabilising eroded sand dunes



PRIORITY FOUR

LIFE ON LAND

To sustainably manage our environment and minimise biodiversity loss



Why is this important?

Natural environment

Our natural environment is diverse and provides habitat for a wide range of native flora and fauna, including threatened species. This environment, including our waterways, provides ecosystem services such as habitat, clean air and water, amenity and regulation of air temperature.

There are also significant social and cultural connections to our land, sky and waterways that are important to recognise to further develop their identity and ensure that culture and nature thrive.

As the climate heats up, our flora and fauna will need to adapt. Areas that were once habitable may not be in the long term and there may be a need for intervention to ensure the survival of some species.

It is the responsibility of council to balance competing human needs and conservation, to preserve our natural resources and cultural landscapes for generations to come.

Agricultural resilience

Within city growth we must consider agricultural resilience given our significant reliance on this industry. The industry is increasingly being impacted by the effects of climate change, both as a key source of carbon emissions and the impact of climate change on land and crop yields.

Agricultural resilience is also important to maintain productive farmland to enable local food production to meet growing demand.

Agriculture can also contribute to decarbonising our economy by storing carbon in the soil, growing tree crops and reducing methane emissions from livestock.

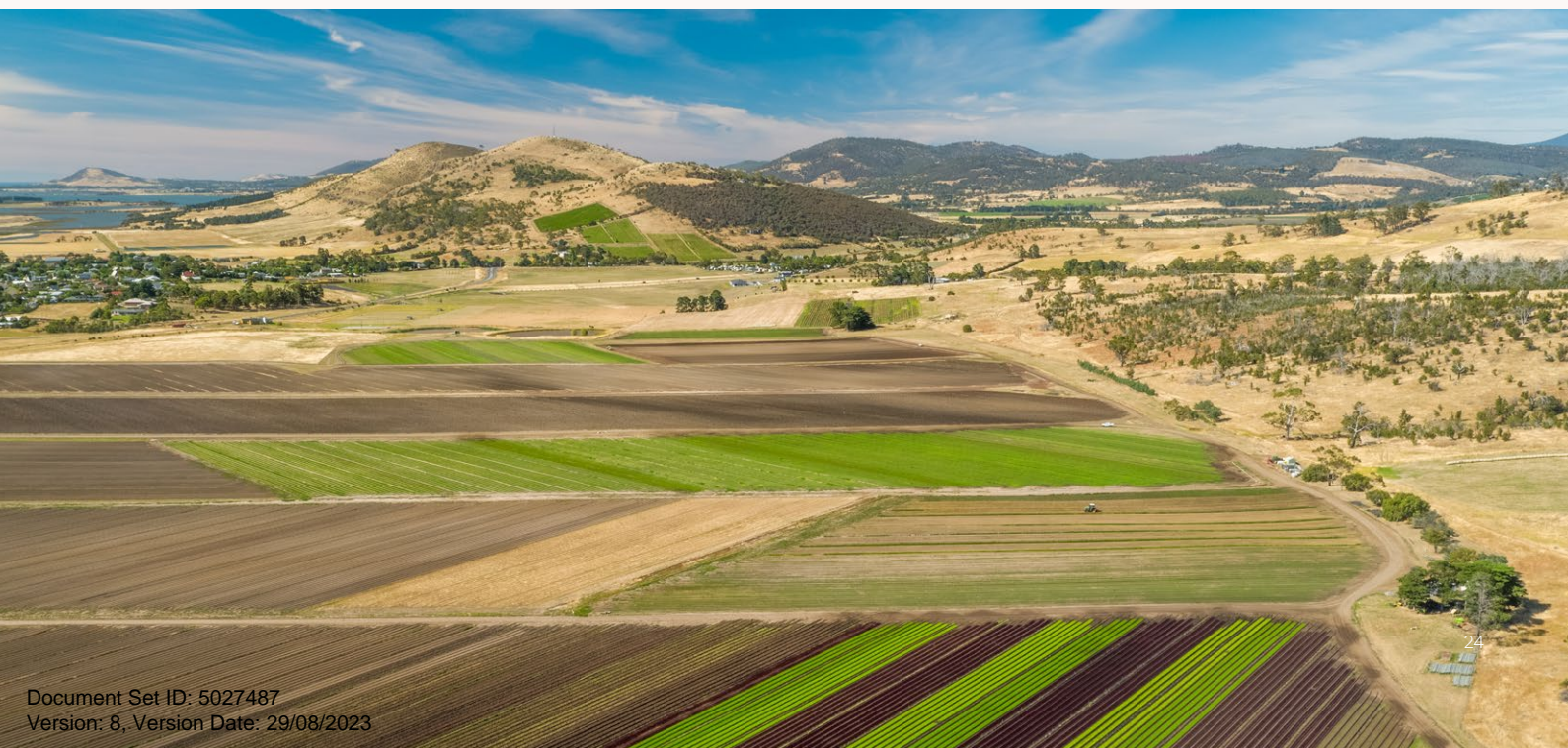
Objectives we will work towards

Natural environment

- In consultation with the First Nations community, reflect, respect and celebrate the Aboriginal community, their heritage and contemporary cultural practices within our city
- Continue to develop and maintain a quality open space network
- Continue to identify and protect important natural values within our city
- Protect natural assets such as reserves, bushland, coasts and saltmarshes within council-managed land
- Support methods that minimise the loss of native vegetation, for example weed control practices
- Continue to provide opportunities for community involvement in the care of the environment
- Continue to monitor existing infrastructure to ensure, as far as is practicable, their continued operation does not adversely impact the environment

Agricultural resilience

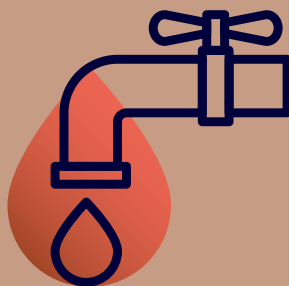
- Work collaboratively with relevant stakeholders to support the sustainable use of our agricultural land
- Advocate for investment in climate resilient practices in agriculture
- Advocate for increased knowledge investment to improve understanding of environmental and carbon offsetting practices
- Encourage sustainable expansion of agricultural operations through agritourism, i.e. complementary experiences that connect people to product or produce



PRIORITY FIVE

CLEAN WATER AND SANITATION

To ensure access to
safe water sources
and sanitation



Why is this important?

Responsible consumption of water

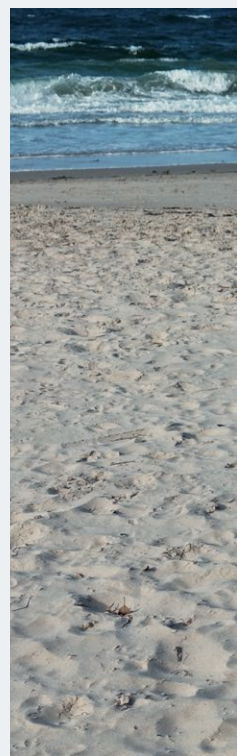
Water is crucial to the health and wellbeing of our community.

The management of our local environment, infrastructure and operations significantly impacts water consumption. Key uses include water for irrigation in our parks and green spaces as well as servicing community facilities such as swimming pools and council owned buildings. Increased use of these facilities will put additional pressure on our water supply to maintain assets at optimal levels.

Efficient water capture and consumption methods and use of alternative water sources will reduce the pressure on supply, particularly when it is hot and dry.

Sanitation

An important role of council is to support provision of safe and healthy water and sanitation services. This requires management and monitoring of our natural resources and built systems, including monitoring and reporting across water quality, water security, water pollution, hygiene, and sanitation.



Objectives we will work towards

- Provide infrastructure that allows stormwater to reach the sea efficiently and without causing flood damage
- Investigate design options and opportunities that minimise hard surfaces that promote concentrated stormwater run-off
- Use water efficiently and effectively within our operations
- Provide for the safe, environmentally responsible, efficient and sustainable provision of stormwater services that have capacity to meet current and future community needs
- Continue development of a proactive monitoring and reporting program to inform and support public safety
- Model sustainable water practices to support community education and adoption
- Continue to implement water sensitive urban design projects to minimise impacts on our ecosystem while maximising efficient water use

Environmental health officers undertaking water sampling



PRIORITY SIX

INDUSTRY, INNOVATION AND INFRASTRUCTURE

To build resilient infrastructure,
promote inclusive and sustainable
industry and foster innovation

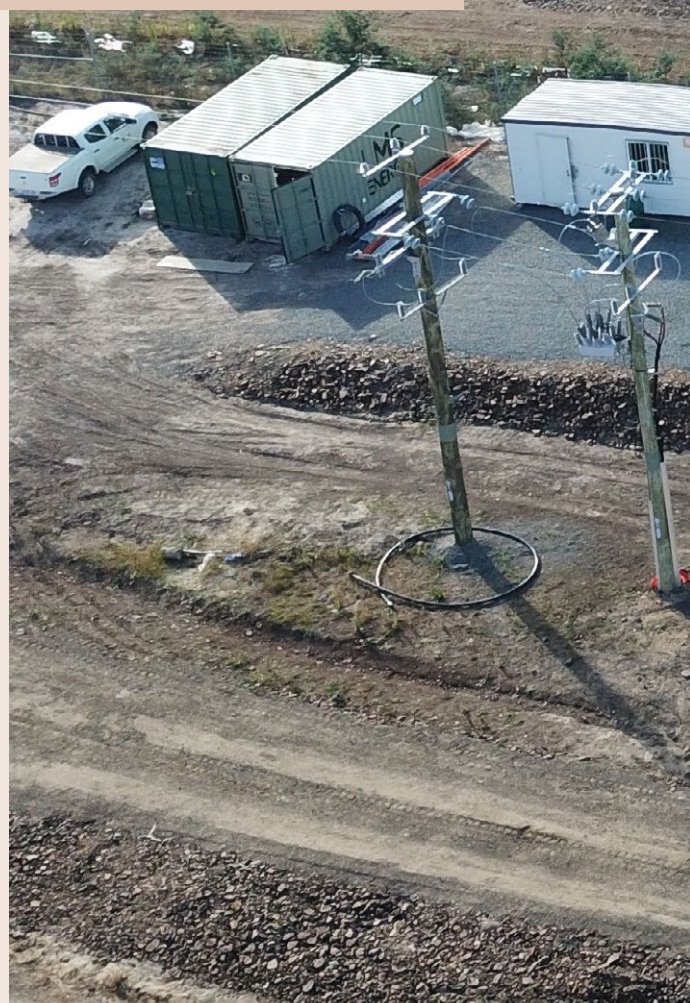


Why is this important?

Innovation leads to the development of sustainable and resilient practices and infrastructure to support economic development and our well-being.

Innovation also supports job and industry growth through leveraging demand for change. Electric vehicles, carbon farming and mining minerals needed for renewable energy infrastructure are examples of industries taking advantage of our changing environment.

Council has capacity to support our community and industries through advocacy and economic development to be more efficient with the resources they use, while reducing operating costs.



Objectives we will work towards

- Within scope of council's capacity to work with industry to encourage design that reduces waste at the source
- Ensure our operations and projects design for the future, including consideration of energy and carbon, water and waste
- Identify current and emerging technologies that enable increased efficiencies and reduce pressure on existing resources within our operations
- Promote inclusive and sustainable industry and commerce
- Integrate sustainability information into our governance reporting
- Leverage emerging technology to improve the efficiency of city infrastructure and services
- Ensure council's asset management plans provide for the improvement of existing infrastructure utilising innovative sustainable practices



LMS Energy's Copping Bioenergy Facility captures and destroys the methane naturally produced by the Copping landfill and converts it into clean, baseload renewable energy.



Clarence...
a brighter place

