



**2019 City of Clarence Australia Day Award recipients:** Kerry Scambler (Citizen of the Year), Kimberley Hogg & Emily Fish - Eastlands Santa Parade (Community Event of the Year), Robin Pulford and Shirley Morrisby (Senior Citizens of the Year) and Emma-Lee Dalglish (Young Citizen of the Year).

## Congratulations to our 2019 City of Clarence Australia Day Award Recipients

The achievements of local residents were recognised at the Australia Day Breakfast on the Boardwalk earlier this year.

Thirteen nominations were received for a 2019 City of Clarence Australia Day Award.

South Arm resident Kerry Scambler was announced as the 2019 City of Clarence Citizen of the Year.

Described as a 'community connector', Kerry has helped to drive a number of positive outcomes for the South Arm community through leadership roles with the South Arm Peninsula Residents Association (SAPRA). Kerry has served as secretary, treasurer and president for more than 20 years and has been president for the past six.

Kerry has driven and strongly supported many activities, such as SAPRA's management of the community centre, the establishment of the Convict History Trail, and the implementation of the community bus serving her community – a partnership between SAPRA, the Risdon Vale and Warrane Mornington Neighbourhood Centres and Council to provide greater transport for those socially or geographically isolated.

"Kerry is described as someone who gets things done in her community and she has certainly been a strong and passionate voice

for residents of the South Arm area," Mayor of Clarence, Alderman Doug Chipman said.

The Senior Citizen of the Year was jointly awarded to Robin Pulford and Shirley Morrisby.

The award recognises Shirley's commitment to the Country Women's Association through leadership roles with local branches of the CWA (Sandford, Bellerive and the Southern Group) and the state body. Among Shirley's achievements, she has delivered programs to newly arrived Sudanese families, teaching them shopping and cooking skills.

Robin Pulford has served his community through membership and leadership of the Lions Club of Clarence, giving more than 20 years to the club. Robin is currently the co-chair of the Clarence Plains One Community Together steering committee, and provides leadership in projects associated with the Clarence Plains Clean-Up.

Young Citizen of the Year was awarded to Emma-Lee Dalglish, an active member of the Clarence Youth Network Advisory Group (YNAG). Emma-Lee has been active on a number of projects, in particular the 'Our Shared Spaces' initiative between YNAG and the Clarence Positive Ageing Committee, to reduce generational barriers.

*Continued on page 2*

### In this issue



**Community engagement**  
Read more about a new community engagement tool  
...Page 2



**Plan for urban growth**  
Study to develop structure plan for Tranmere-Droughty Point-Rokeby peninsula  
...Page 3



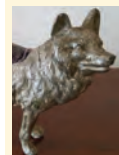
**Rosny Park Urban Design Framework**  
Council working to improve amenity of Rosny Park  
...Page 3



**Help to Health project**  
Interested in supporting your community?  
...Page 4



**Clarence Foreshore Trail**  
Increasing connectivity on this popular trail  
...Page 4



**What's happening in Clarence**  
A brief snapshot of other projects and initiatives in the city  
...Page 5



**What's on in Clarence** ...Page 5  
**Your Aldermen** ...Page 6  
**Public works** ...Page 6  
**Council meetings** ...Page 6

# 2019 City of Clarence Australia Day Award recipients

*Continued from the previous page*

Emma-Lee has taken on a leadership role on a number of activities such as Generation Trivia and was selected to represent the group on these learnings at the second national Age Friendly Forum in Bellerive in 2017, and the International Federation of Ageing's Global Conference in Canada last year.

Community Event of the Year was awarded to the Eastlands Santa Parade.

Organised by the Eastlands Centre Management in partnership with Tasmania Police, schools and community groups, the parade attracts a crowd of 4,000 and brings the eastern shore community together to celebrate Christmas.

The City of Clarence Australia Day Awards were presented by Australia Day Ambassador John X and the Mayor of Clarence Alderman Doug Chipman at the Australia Day celebrations on the Bellerive Boardwalk.

"Our award recipients demonstrate community spirit at its best," Mayor Chipman said.

"Along with all our nominees, they are committed to their community and to helping



*Some of the 29 new citizens of Clarence welcomed on Australia Day at Bellerive Boardwalk.*

others. Their work helps to create a vibrant, welcoming and positive community."

Along with the announcement of award winners, 29 new Australian citizens from 12 countries (Japan, Nepal, Malaysia, Bhutan, Spain, the UAE, Bulgaria, the Philippines, China, the UK, Thailand, South Africa) were welcomed at a ceremony on the Boardwalk.

More information on the City of Clarence Australia Day Award recipients and nominees can be found on the Australia Day Awards page of the website - [www.ccc.tas.gov.au/community/community-services/australia-day-awards/](http://www.ccc.tas.gov.au/community/community-services/australia-day-awards/).

## New Online Engagement Community Consultation Tool

Council will soon implement an online engagement website to enhance consultation with the community.

The online engagement tool will be accessible from the home page of council's website and used for a wide range of community consultations.

The online tool delivers a number of engagement methods, such as surveys, polls, interactive mapping, and moderated discussion forums that can be used depending on the type of consultation at hand.

From a central location, users will be able to see all current consultations and associated documents, ask questions from the project team and be kept informed of progress on key milestones through newsletters or email.

Additionally, all past consultations that have been conducted via the website will be available for users to view information and keep abreast of project updates.

To submit feedback during a consultation, users will need to register their details on the website.

By doing this, information can be verified and users can be notified via email of new consultations and find out project updates.

"This new tool will streamline consultation planning, reporting and communication," Mayor of Clarence, Alderman Doug Chipman said.

"A real benefit of the website will also be that we can deliver focused community and stakeholder engagement in a secure and informed way with all resources associated with that project available in the one location."

The tool will not replace more traditional mediums such as letters to residents, forums and meetings. It can be used in conjunction with these methods to enhance involvement when identified in the consultation planning phase.



The tool will not be used for consultations that follow a statutory process.

The online engagement tool will be accessible from all desktop, mobile and tablet devices.

Once live it will be available on council's website.

Stay tuned to our website and Facebook page for a go-live date and how to register.



# Plan for Future Urban Growth in the City

Council has begun planning for the sustainable growth of the Tranmere - Droughty Point - Rokeby peninsula, which has been identified as Clarence's main future urban growth area in the Southern Tasmanian Regional Land Use Strategy.

The study area runs around the peninsula beginning at the current edge of residential development at both Tranmere and Rokeby. The land slopes up from the River Derwent to a wide central spine which itself is a prominent visual feature of the Hobart sub-region.

From a sub-regional perspective, the west side of the study area is visually significant as it forms the eastern bank of the River Derwent; the gateway to Hobart from the sea. This makes the site a significant component of one Australia's most picturesque city settings.

Council has decided that a structure plan should be prepared to guide future development of the area, so that it can properly plan for factors like the visual significance; physical opportunities and constraints, including the topography;



*View of Tranmere.*

and the need for coordinated delivery of services and facilities for a growing population.

A structure plan is a broad scale plan which identifies the key components of future development – a desirable urban form; a legible and connected movement network for vehicles and pedestrians; provision for an appropriate range of housing types; open space networks; recreational, commercial and community facilities; and a staging program.

Council has engaged town planning and urban design consultants to undertake the structure plan by July this year.

A community consultation process is integral to the project and will soon be undertaken by the consultants. Timeframes for the consultation will be determined in the coming weeks.

Stay tuned to council's website and Facebook page for further details of the consultation to ensure you have your say.

## Council Working to Improve Amenity of Rosny Park

Council has begun a project to deliver a long-term strategic direction for the Rosny Park precinct, in order to provide greater opportunities for businesses and service providers as well as improved amenity for everyone who visits and uses the area.

The Rosny Park Urban Design Framework will be an overarching plan that will set a strategic direction for the Rosny Park precinct, which includes the entire commercial area, the historic Rosny Farm complex and the Rosny Park golf course. Essentially, it is intended to help chart a course toward the desired future physical form of the area.

This long range plan will address a wide range of issues including streetscaping with paving and landscaping, building design, growth opportunities for businesses and service providers, traffic management, car parking, heritage, pedestrian accessibility and personal safety, as well as recreational and cultural activities.

The recent upgrading of the Bayfield Street streetscape is an example of the type of improvement project that the urban design framework may coordinate in the future.



*Recent upgrades to Bayfield Street in Rosny Park.*

As part of the project, council will conduct community consultation to engage with interested community members, businesses and service providers at key points in the planning process.

Council will shortly be seeking views via an online survey hosted on council's website. The survey will be the first round of

consultation. Further opportunities to contribute will be provided as the project advances to completion later in 2019.

Stay tuned to our website and Facebook page for more information.

# Become a Help to Health Friend

Some residents of Clarence find that taking control of their own health care can be tricky.

Reasons for this include: not knowing what help is available; finding health information hard to understand; and feeling that services are sometimes unwelcoming or unhelpful.

Clarence City Council's Help to Health project has four different initiatives to help combat these challenges: The Right Place; It's Ok to Ask; Clarence Talks; and Help to Health Friends.

A Help to Health Friend is someone willing to volunteer their time to help their community by sharing health and wellbeing information.

Friends meet quarterly to participate in learning, share stories and information and help make decisions about how council can help and support our community through the project.

"I think there are a lot of people in the community who don't know what services or support is out there, or how to choose one when they're looking for help," said Clarence resident and Help to Health Friend, Sharon Doherty.

"Since becoming a Help to Health Friend, I love having the opportunity to build on my



*The Help to Health project aims to help the community get better access to health care and take control of their health and wellbeing needs.*

own knowledge and share information with others that might help them better navigate health and wellbeing services. Word of mouth is powerful."

If you would like to learn more about the project or become a Help to Health Friend, contact council on 0438 096 465 or email [helptohealth@ccc.tas.gov.au](mailto:helptohealth@ccc.tas.gov.au).

More information is available at [www.liveclarence.com.au/help-to-health](http://www.liveclarence.com.au/help-to-health) or pick up a sign-up sheet from Council Offices.



## New Track at Fort Direction

Residents and visitors to South Arm now have a new walking track to enjoy.

The new track complements the existing track network on the peninsula and is located on Fort Direction, connecting Potters Hill Reserve on Fort Direction Road to the coast.

The new track boasts spectacular 360 degree views from the labyrinth at the top of Potters Hill including vistas across the Derwent, Tinderbox Hills and Bruny Island.

Where the track meets Fort Beach, walkers have a choice of heading south along the beach to Cape Deliverance, where the Iron Pot lighthouse can be viewed, or heading north along the coastal Blessington Track which finishes near the South Arm war memorial.

# Improvements to the Foreshore Trail

Improvements to the Lindsfarne section of the Clarence Foreshore Trail are now complete.

The newly constructed section adds to the works already completed in the area under the Tasman Bridge and around Montagu Bay, and further links the various sections of the trail to create a safer and more pleasant trail experience for all users.

The new section spans from Bay Road in Lindsfarne along the foreshore through to Ford Parade.

The existing asphalt pathway has been widened to a 2.5 metre shared path with some minor stormwater works and has a much smoother surface to improve the user experience for pedestrians and cyclists.

Landscaping work and the upgrade of the existing carpark opposite Beltana Park will be undertaken in the cooler months.

These works form part of an overall plan to extend and improve the Clarence Foreshore



*A section of the newly constructed shared path at Lindsfarne.*

Trail with future stages to continue from Ford Parade through to ANZAC Park.

Road detours were in place for several weeks to allow for the completion of this project.

We would like to thank everyone for their patience while the works were taking place.

## Neighbour Day

Australia's annual celebration of community is just around the corner, and council is calling on the community to join in.

Neighbour Day, held on Sunday 31 March, encourages members of the community to connect with, and celebrate the connections we have with the people living in our local neighbourhood. This year's theme is 'creating connections to combat loneliness'.

Mayor of Clarence, Alderman Doug Chipman said there were a number of ways to reach out to our neighbours to reduce isolation and build connections in the community.

Community members who are keen to host a Neighbour Day event, can register at [www.neighbourday.org](http://www.neighbourday.org). If you plan to hold an event in a public place in Clarence, please remember to apply for a permit with Council by phoning 03 6217 9500.

Further information, resources and ideas for Neighbour Day events are available from [www.neighbourhooday.org](http://www.neighbourhooday.org).



## A Brief Snapshot of What's Happening in the City



### Collectors Roadshow

Sunday 7 April  
Collectors Roadshow  
Rosny Farm 11am – 3pm  
Free entry

It's time to raid the attics for those antiques and mystery objects you've always wanted to know more about.

Hobart antique luminaries Gordon Brown, Warwick Oakman and their posse of experts will be on hand to examine your items and dazzle with their expertise.

There will be live gypsy jazz from local musicians Django's Tiger and delicious nibbles and coffee available.

Collectors Roadshow promises to be an entertaining day for all in the delightful grounds of Rosny Farm.

For more information phone 6217 9607 or visit the website at:  
[www.clarenceartsandevents.net](http://www.clarenceartsandevents.net).



### Sign Up to Receive Rates Notices and News by Email

Would you prefer to get your rates notices and other council publications by email?

This service is more timely, cost-effective, convenient and environmentally friendly.

Simply click on the 'Rates Notices by Email' promotion on the home page of our website at [www.ccc.tas.gov.au](http://www.ccc.tas.gov.au) to register your details with us.



### My Neighbourhood Launch

My Neighbourhood is now available on council's website to search for a variety of council facilities and activities by suburb or Clarence-wide.

Find the tracks and trails, parks and reserves, barbecues, beaches, community halls and centres, sportsgrounds and other places of interest that are in your area.

Simply click on 'My Neighbourhood' from the home page of the website to begin your search.

This function is part of the newly redeveloped council website and is designed to help you get active and discover more around your city.

Further information including dog exercise areas and public toilets will be included soon.

### New Computer System

Council is putting in new computer systems across the Easter period so that we can improve the services we provide to you.

We appreciate your patience as our staff learn the new system and processes. Once this new system is in place, we will work towards launching online services where you will be able to do more things at a time convenient to you, through our website.

Keep an eye out for the next Rates News where we will share further information about this new project.

### Key Council Phone Numbers

General enquiries - 6217 9500  
After hours - 6217 9700  
Waste enquiries - 6217 9690  
Trees on Council land - 6217 9697  
Children's Services - 6217 9610  
City Rangers (dogs/parking) - 6217 9600  
Environmental Health - 6217 9570  
Rates enquiries - 6217 9650

## Events in Clarence

Saturday 9 March, 9am-10.30am  
(Held weekly on Saturdays)  
**Bellerive Parkrun**  
Bellerive Beach Park, Derwent Street

Saturday 23 March, 9am-3pm (Every Saturday)  
**Richmond Village Market**  
Richmond Village Green, 54 Bridge St  
[www.richmondvillagemarket.com.au](http://www.richmondvillagemarket.com.au)

Friday 29 March, 8.30pm  
**Gold Grass Cinema: Spirited Away**  
Rosny Barn, Rosny Farm  
Tickets and further details:  
[www.clarenceartsandevents.net](http://www.clarenceartsandevents.net)

29 March - 14 April (Wed-Sun, 11am-5pm)  
**Kyoto to nipaluna (Hobart) - Water, Fire, Earth and Nature (exhibition)**  
Schoolhouse Gallery, Rosny Farm  
[www.clarenceartsandevents.net](http://www.clarenceartsandevents.net)

Saturday 30 March, 8.30pm  
**Gold Grass Cinema: Pulp Fiction**  
Rosny Barn, Rosny Farm  
Tickets and further details:  
[www.clarenceartsandevents.net](http://www.clarenceartsandevents.net)

Sunday 31 March, 8am-12noon  
**The Matthew Millhouse Salute**  
(Run, cycle, kayak, walk to support The White Cloud Foundation)  
Bellerive Beach Park  
Facebook: /thematthewmillhousesalute

Sunday 31 March, 9.30am-3pm  
**Richmond Village Fair**  
Richmond Village Green, 54 Bridge St  
[www.richmondvillagefair.com.au](http://www.richmondvillagefair.com.au)

27 April - 19 May (Wed-Sun, 11am-5pm)  
**Diversity: Tasmanian Ceramics Association (exhibition)**  
Schoolhouse Gallery, Rosny Farm  
[www.clarenceartsandevents.net](http://www.clarenceartsandevents.net)

Visit our website for more events. We also have a new community events calendar on the website for community groups and not-for-profit organisations to promote their events for free. To submit your community event - [www.ccc.tas.gov.au](http://www.ccc.tas.gov.au)

For exhibitions and events -  
[www.clarenceartsandevents.net](http://www.clarenceartsandevents.net)

# Aldermen's Articles

Council policy provides an opportunity for Aldermen, in turn, to place an article in Rates News.



**Alderman  
Dean Ewington**

First of all thanks to all who voted for me. It's a privilege to serve my community and I hope to make a difference, especially in the key area of improved recreational opportunities for our community.

While we do have some great public open spaces, playgrounds, sportsgrounds, bike parks, etc. we can, and must do better.

The power of computers and social media to keep people indoors and isolated can only be beaten with significant upgrades in our recreation spaces that have to be even better than what we have done up to now. Our children are worth it.



**Alderman  
Peers**

Budget deliberations will occupy the months of March, April and May.

Many projects and items will come before all aldermen for careful consideration for funding.

Unfortunately, not all items placed before aldermen can be funded.

Tough decisions need to be made to keep rates at a reasonable level for all ratepayers.

The Risdon Vale Hall Committee has decided to paint the inside of the large hall and to look at much needed external signage. The hall is for hire at a very reasonable fee.

Due to the horrendous fires around the state, council's fire crews are continuing with fuel reduction work.

## Your Aldermen



**Mayor  
Alderman Doug Chipman**  
PO Box 96, Rosny Park  
0409 704 835  
mayor@ccc.tas.gov.au



**Deputy Mayor  
Alderman Heather Chong**  
331 Fingerpost Road, Richmond  
0408 604 509  
ald\_hchong@ccc.tas.gov.au



**Alderman Beth Warren**  
PO Box 96, Rosny Park  
0438 439 219  
ald\_bwarren@ccc.tas.gov.au



**Alderman James Walker**  
PO Box 260, Lindisfarne  
0421 320 669  
ald\_jwalker@ccc.tas.gov.au



**Alderman Sharyn von Bertouch**  
PO Box 96, Rosny Park  
0429 199 113  
ald\_svonbertouch@ccc.tas.gov.au



**Alderman John Peers**  
PO Box 11, Lindisfarne  
0419 309 220  
peersccc@netspace.net.au



**Alderman Luke Edmunds**  
PO Box 96, Rosny Park  
0499 990 232  
lukeedmundsccc@gmail.com



**Alderman Tony Mulder**  
PO Box 96, Rosny Park  
0428 685 337  
tony@mulder.net.au



**Alderman Richard James**  
107 Gordons Hill Road, Lindisfarne  
0418 135 808  
rjames@trump.net.au



**Alderman Dean Ewington**  
PO Box 96, Rosny Park  
0418 146 546  
ald\_dewington@ccc.tas.gov.au



**Alderman Wendy Kennedy**  
PO Box 96, Rosny Park  
0438 100 446  
ald\_wkennedy@ccc.tas.gov.au



**Alderman Brendan Blomeley**  
PO Box 109, Lindisfarne  
0413 972 307  
brendan@brendanblomeley.com

## Upcoming works

### Roads

- Pothole repairs in Otago Bay, Rosny and Bellerive
- Construction of walkways within the Clarendon Vale Green Belt
- Construction of footpath and bus bay on Acton Road, Acton Park
- Road pavement stabilisation works in Acton Drive
- Road rehabilitation and drain construction works in South Terrace, Lauderdale
- Kerb, gutter and footpath upgrades on Kerria to Lantana Roads in Risdon Vale
- Gravel formation work on Dixon Point Road, Sandford
- Reseal works on various roads

### Drainage

- Investigation to improve stormwater quality along Howrah Beach
- Hay Street stormwater upgrade at Seven Mile Beach
- Continuation of the stormwater collection project at Cambridge Oval

### Parks and reserves

- Track construction from Blessington to Fort Direction (South Arm), Pindos Park to Gully Track (Tranmere), Flagstaff Hill to Caves Hill (Meehan Ranges), Glebe Hill Reserve
- Replacement of Neilson Park playground equipment
- Irrigation upgrades at Bellerive Beach Park in Bellerive and Tanundal Park in Howrah
- Roches Beach access works
- Construction of a ball catching fence at Wentworth Park sportsground

### Council facilities

- Accessibility compliance works at Geilston Bay Playgroup Centre and Warrane Sports Centre
- Installation of grease traps at council facilities that prepare food onsite

## Council meetings

Monday 18 March 2019  
Monday 8 April 2019  
Monday 6 May 2019  
Monday 27 May 2019  
Monday 17 June 2019