

Pathway adjacent sea wall (Ch. 0-200)

In areas where sea wall is more or less adjacent to path, widen path and arrange fence and garden beds as indicated in **Detail 1**

- Where embankment is steep on eastern side of path ie. greater than 1:4 replace timber edge to garden bed with low stone/boulder retaining wall.
- Generally change existing fence to partial barrier - Refer **Detail 5 - Fence Type 1**
- Gradually repair stone sea wall where it is being undermined. Best method still to be determined.
- Where path is presently very closed in by large shrubs, remove and replace with lower planting immediately adjacent path and larger shrub planting more than 500mm away from path edge.

Existing Lookout (Ch. 200)

Occasional use for performances, weddings, photographic opportunities and resting. Check for deterioration of sub-structure. Timber decking needs replacement and the steel balustrade needs painting, or replacing to match recycled plastic top rail proposed for fence and balustrade top rails throughout the site.

- Remove higher shrubbery around seating at Chainage 180
- Remove some planting along shoreline path on upper side to allow easier access to grassy bank from shared path.
- Replace all seating throughout the site with CCC's preferred seat - Cox's Promenade - bench or seat - HDPE slats only - no timber.
- Relocate existing blue recycled plastic seat and replace with CCC's preferred seat.
- Widen path where less than 2.4M wide.
- Provide irrigation to grassed areas

Regatta Pavilion

Discuss maintenance of building with Crown Lands and leasees regarding future usage opportunities to activate and enhance visitor / local experiences.

- Formalise path and carparking on street side of pavilion. Provide 90 degree parking, paving or planting and opportunities for sitting.
- Provide conforming balustrade above existing retaining walls
- To reduce the need for fence panels along the pathway (adjacent the Regatta Pavilion) provide large boulders to replace seawall steps . Refer **Detail 2**

Carpark (Ch. 300)

- Re work entry and exit to this carpark, current grading is dangerous.
 - Prime and seal existing carparks.
 - Provide planted bioswale between sealed carparks and shared paths.
- Increase width of carpark, provide boulders to retain embankment.
- Widen shared path to 2.4m min. Occasionally extend a pathway from the carpark to the pathway.
 - Plant embankment with ground covers and shrubs to 3-4 m. - refer **Detail 3**

Around the Starter's Box

- Maintain the path to the jetty. The jetty is a wonderful element providing a watery view of the Bluff precinct. Path provides foreshore access and walking at low tide.
- Thicken vegetated embankment with shrubs to 4-5M height to lessen grass / weedy maintenance.
- Formalise carparking, reduce gradient of carpark with boulders, provide 2-3 access paths onto shared path. - refer **Detail 3**

End of Thomas St (Ch. 450 - 500)

- Use this area as a viewing, sitting and informal picnic area.
- Change the balustrade, provide formal as well as informal seating.
- Pave over existing concrete/grassed area.
- Provide informal boulders for sitting, a drinking fountain and a bike rack.
- Make area larger by relocating existing pathway closer to the Esplanade.
- Formalise extent of prime and seal carparking. To retain informal edge, do not provide provide kerbing to carparking areas. Refer **Detail 3**
- Existing Blue Gum to be retained. Clean stem lower branches to enable views beyond. Extend and manage vegetation below lookout.

KANGAROO BAY



Approach to Shared Path, from Ferry Terminal and Carpark

The fairly random approach to the shared pathway from the Ferry terminal and Kangaroo Bay is uninviting. A confusion of fences, parked vehicles close up to the path, several types of pavements in various states of maintenance and incongruous interpretive signage.

- Consider the extent of signage required in this area
- Relocate path between ch. 25 and ch. 45 to allow for some planting between sea and path by removing the pine log retaining wall.
- Retain existing vegetation between wall and new path position.
- Provide pavers adjacent path to increase width.
- Retain fence position, but change fence to detail indicated for the length of Esplanade. Refer **Detail 1 and Detail 5**
- On eastern (road) side of this area provide bollards (grey recycled plastic) between the vegetation edge and carparks. Interplant existing vegetation with *Lomandra longifolia* as dense edge to carpark.
- Gradually remove and replace largest plants to improve sightlines along the path - eg the Kangaroo Apple and several of the Acacias.
- Provide and maintain occasional gaps through *Correa* shrubbery for connecting tracks from shared path to parking area.

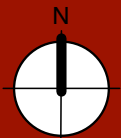
Victoria Esplanade Streetscape (Ch. 0 - 850)

To aid in unifying the streetscape and in reducing the dominating extent of bitumen roading :

- Break up large expanses of gravel verge parallel parking with areas of low planting. Remove timber log barrier. Provide recycled plastic bollards at 2.0m centres.
- Consider using a change of pavement to designate parking areas on the eastern side of the road - eg interlock pavers.
- Provide low tussock/shrub planting for first 1m edge on western side where no organised carparking.

| LEGEND | |
|--------|---|
| | Existing tree |
| | Existing vegetation to be retained |
| | Existing vegetation to be removed |
| | Proposed planting areas |
| | Existing grassed areas / proposed grassed areas |
| | Existing / proposed carparks |
| | Existing / proposed shared way |

Background aerial courtesy of NearMap



Carpark and Grassy Embankment (Ch. 540 to 590)

This area is significant in aboriginal heritage. Retain as a grassy bank for viewing the rocky platform, its bird life, fishing from the rocks, diving for abalone, and mussels. The rock platform to the north was a sheltered area at low tide, protected from the south westerlies and likely used by aboriginal groups.

The tree root in this area is the remains of a Sheoak shelter tree formed more than 200 years ago. Retain establishing young Sheoaks on the northern embankment. Provide a living interpretation of the technique used to construct these shelters. (The growing tree is kept fairly low with the main stem gradually bent over and managed as it grows.)

- Construct a low stone wall, up to 500mm high, for sitting on or leaning against in the sun - make accessible from the shared pathway. Consider describing the Sheoak shelter tree story, the food gathered in the area, the local fauna as part of the stone wall construction.
- Relocate boulders as indicated and reduce carpark gradient - **Detail 3**
- Minimise planting adjacent the path to encourage spilling out on to the grassy areas above and below the path. The existing Acacias are in poor health in this area, provide some maintenance or remove and replace with Sheoaks.
- Provide new *Poa /Lomandra/Correa/ Westringia* planting below reconfigured carpark.
- Provide irrigation to grassed areas.

Dillon Street Boat Launch Area (Ch. 750)

This area is used for occasional launching of non-powered boats such as dinghies and kayaks. Consider resurfacing ramp for safer access. This area is an unsightly expanse of gravel, clumps of boulders and weedy vegetation taking up over 200m of the road edge.

- Reorganise to allow for some vehicle parking using similar techniques to other areas along the Esplanade. Plant up to 2M wide along roadside edge where indicated.
- Reuse existing boulders to retain carpark edge, provide boulders to match for additional retaining requirements.

Abbott St Embankment to River

This area is being undermined by wave action. Provide large boulders - up to 1500 x 1500mm sandstone set into embankment to reduce wave impact.

Victoria Esplanade - Abbott St to Bluff Lookout

Seal gravel road with two coat prime and seal. Maximum width to be 2.7m. Use aggregate to match shared path - eg. Limestone aggregates to signify that this part of the Esplanade is different to the surrounding suburban roads. Manage drainage with WSUD techniques. Remove pine log barrier, provide stone or similar kerb, exposed aggregate concrete shared path and regular bollards @ say 20m centres. Relocate fence 400 - 600mm closer to cliff to obtain greater pavement width.

Access to Kangaroo Bluff Historic Site from Victoria Esplanade

Access from this side of the Historic Site is not sought or encouraged by the Parks and Wildlife Service. This access directs pedestrians to the outer stone walls. It isn't a logical entry to the site. PWS would prefer the timber steps to be removed to discourage majority of pedestrians from entering the site this way.

- Some amelioration of the embankment to limit erosion in the form of discreet stone steps could be acceptable for inevitable use by locals.

The Bluff Lookout to Gunning Street

Provide a WSUD solution along inside edge of roadway. Drain the swale to a detention basin on the northwestern corner of Gunning St.

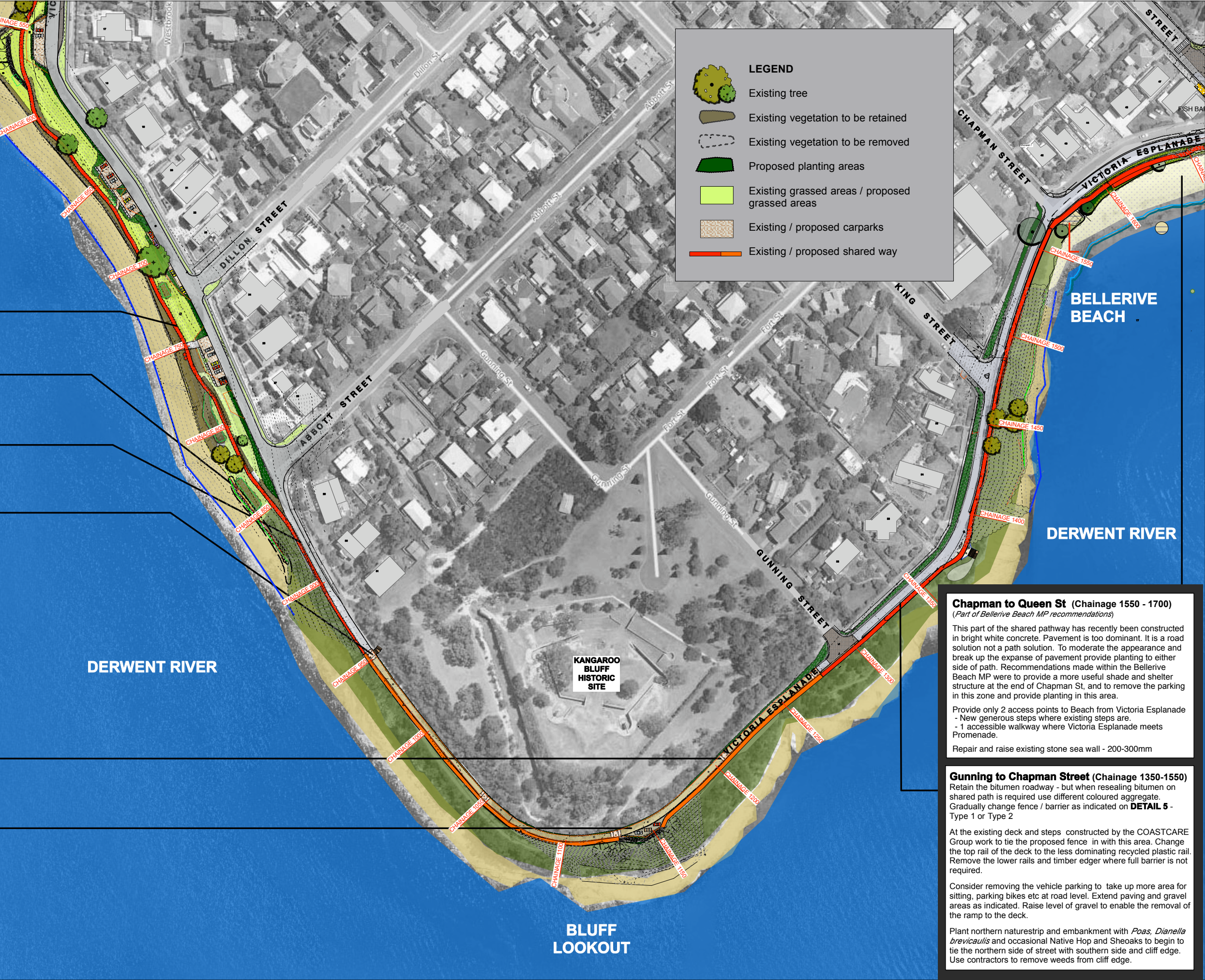
- At Gunning Street junction, change road pavement to interlock pavers or similar to continue to provide cues that this area is a slow drive zone. Maintain the roadway at maximum width of 2.7M.
- When bitumen surface on shared path next requires an upgrade, replace with exposed aggregate concrete to match new concrete being provided around the Bluff.
- Continue to replace the existing fence with the proposed timber post, recycled plastic top rail and cyclone mesh infill panel - **Detail 5** - Type 2. Remove lower timber edge to existing fence.

Work with Parks and Wildlife Service to provide signage to encourage tourists and path users to visit the Kangaroo Bluff HISTORIC SITE via Gunning Street.

The Bluff Lookout (Ch. 1150)

This is a dramatic lookout half way along the Esplanade - a place to slow down, view the boats, the River, the birds, the weather, to whale watch....

- Reorganise parking - allow for the existing number of carparks, up to 3 no. with a 30 min. parking limit. Provide bicycle parking in this area.
- Remove the pine log barrier and replace with grey recycled plastic bollards to match other bollards @1.5m c-c and low planting as an elegant edge to the cycleway and parking. Provide 2 no. seats - as described (Ch 200 - Existing Lookout)
- The existing fence is a mix of rusting weldmesh and steel posts, timber posts and cyclone wire panels and some open galvanised steel rails- all are in poor condition and detract from this wonderful location
- Provide new timber posts, mesh and recycled plastic top rail - **Detail 5**.
- Future option to provide an alternative access to Bellerive Beach via stepped path to rock platforms.
- The vegetation is part of the *Allocasuarina verticillata* forest (NAV). Weeds are spreading along the fence. Choose interesting and pretty low shrubs and groundcovers found in this vegetation group to plant in and around the fence and bollards. Use experienced weed management contractors to undertake weed removal on the cliffs. Continue the management of the inside drainage channel using WSUD techniques.



- LEGEND**
- Existing tree
 - Existing vegetation to be retained
 - Existing vegetation to be removed
 - Proposed planting areas
 - Existing grassed areas / proposed grassed areas
 - Existing / proposed carparks
 - Existing / proposed shared way

Chapman to Queen St (Chainage 1550 - 1700)

(Part of Bellerive Beach MP recommendations)

This part of the shared pathway has recently been constructed in bright white concrete. Pavement is too dominant. It is a road solution not a path solution. To moderate the appearance and break up the expanse of pavement provide planting to either side of path. Recommendations made within the Bellerive Beach MP were to provide a more useful shade and shelter structure at the end of Chapman St, and to remove the parking in this zone and provide planting in this area.

- Provide only 2 access points to Beach from Victoria Esplanade
- New generous steps where existing steps are.
- 1 accessible walkway where Victoria Esplanade meets Promenade.

Repair and raise existing stone sea wall - 200-300mm

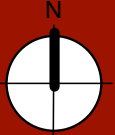
Gunning to Chapman Street (Chainage 1350-1550)

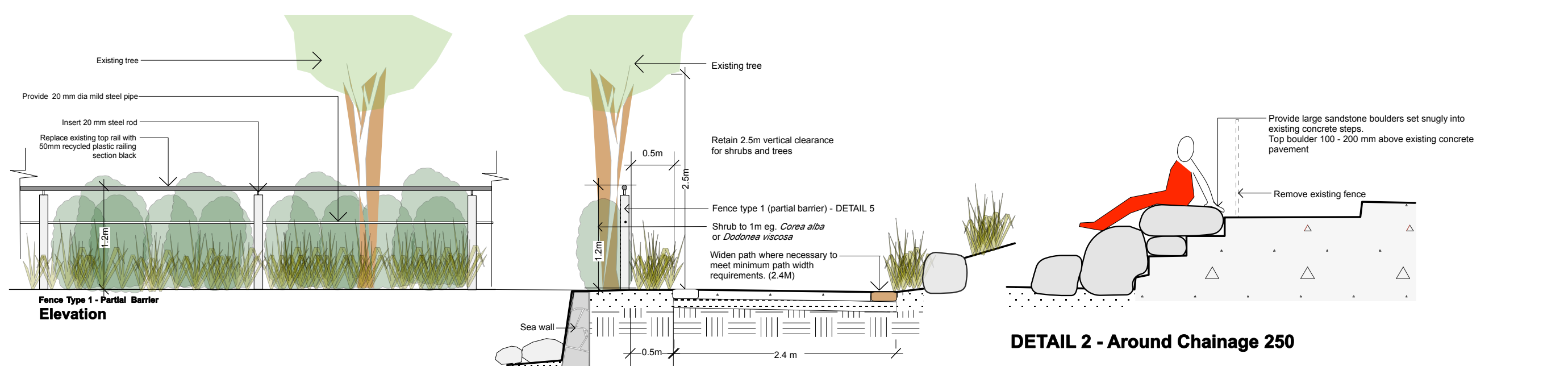
Retain the bitumen roadway - but when resealing bitumen on shared path is required use different coloured aggregate. Gradually change fence / barrier as indicated on **DETAIL 5** - Type 1 or Type 2

At the existing deck and steps constructed by the COASTCARE Group work to tie the proposed fence in with this area. Change the top rail of the deck to the less dominating recycled plastic rail. Remove the lower rails and timber edger where full barrier is not required.

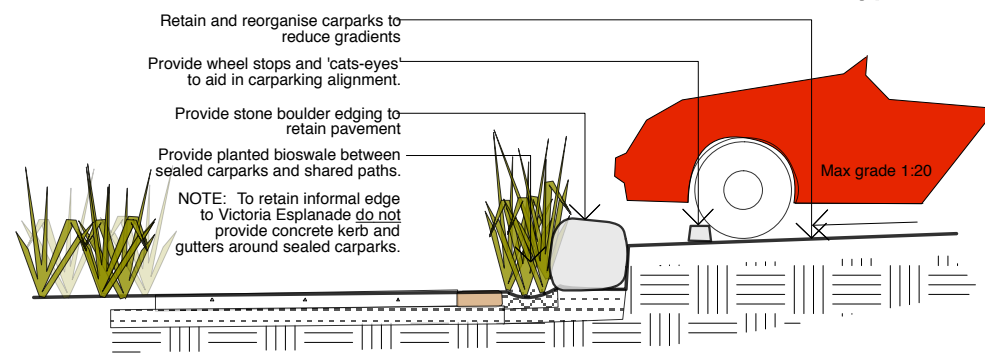
Consider removing the vehicle parking to take up more area for sitting, parking bikes etc at road level. Extend paving and gravel areas as indicated. Raise level of gravel to enable the removal of the ramp to the deck.

Plant northern naturestrip and embankment with *Poas*, *Dianella brevicaulis* and occasional Native Hop and Sheoaks to begin to tie the northern side of street with southern side and cliff edge. Use contractors to remove weeds from cliff edge.

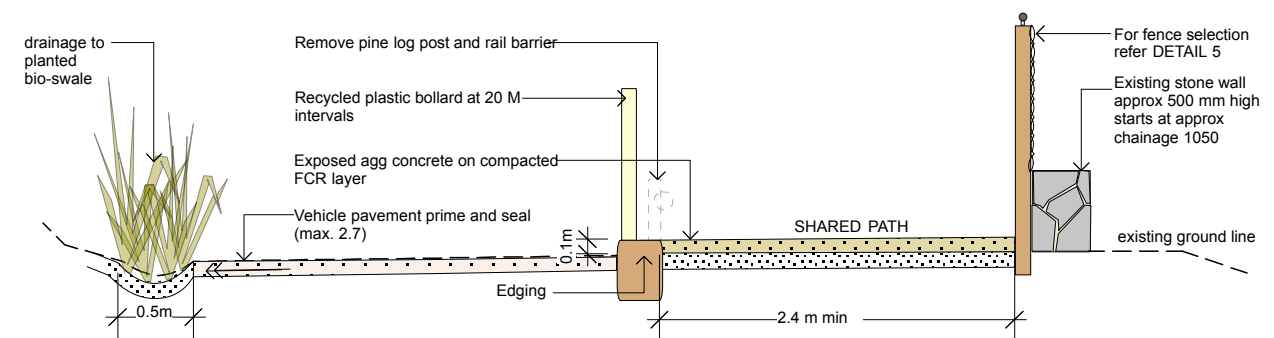




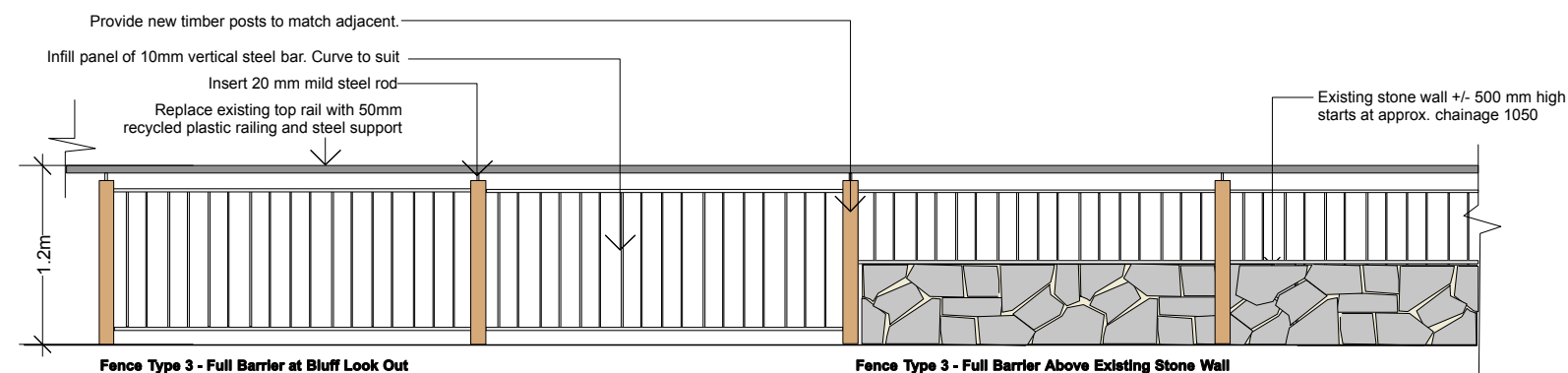
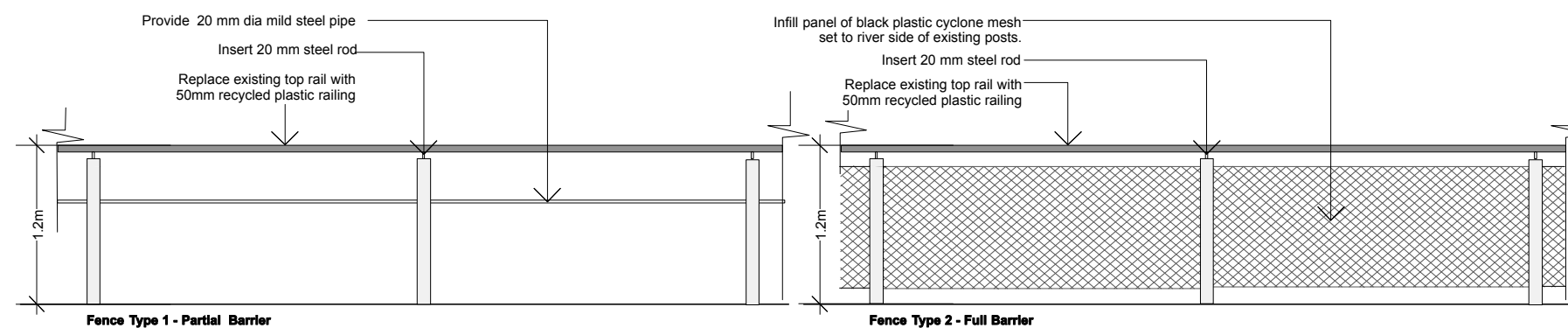
DETAIL 1



DETAIL 3 - Typical Carpark Edge to Shared Path



DETAIL 4 - Victoria Esplanade Around Bluff



DETAIL 5 - Fence Details

VICTORIA ESPLANADE and KANGAROO BLUFF - LANDSCAPE PLAN

DETAILS

Scale: 1:50 @ A3 8th March, 2013

Susan Small Landscape Architects - 25/33 Salamanca Place Hobart
Ph / Fax 6224 4889 - email ss.ssla@bigpond.net.au