

Schoolhouse Gallery Specifications

- All rooms have adjustable gallery hanging system 2.4m from floor.
- Main room has 9 equi-spaced open rafters 3.3m from floor level from which items can be hung.
- The three windows in the main room can be covered by panels 1600w.
- All rooms have adjustable barrel head track spots.

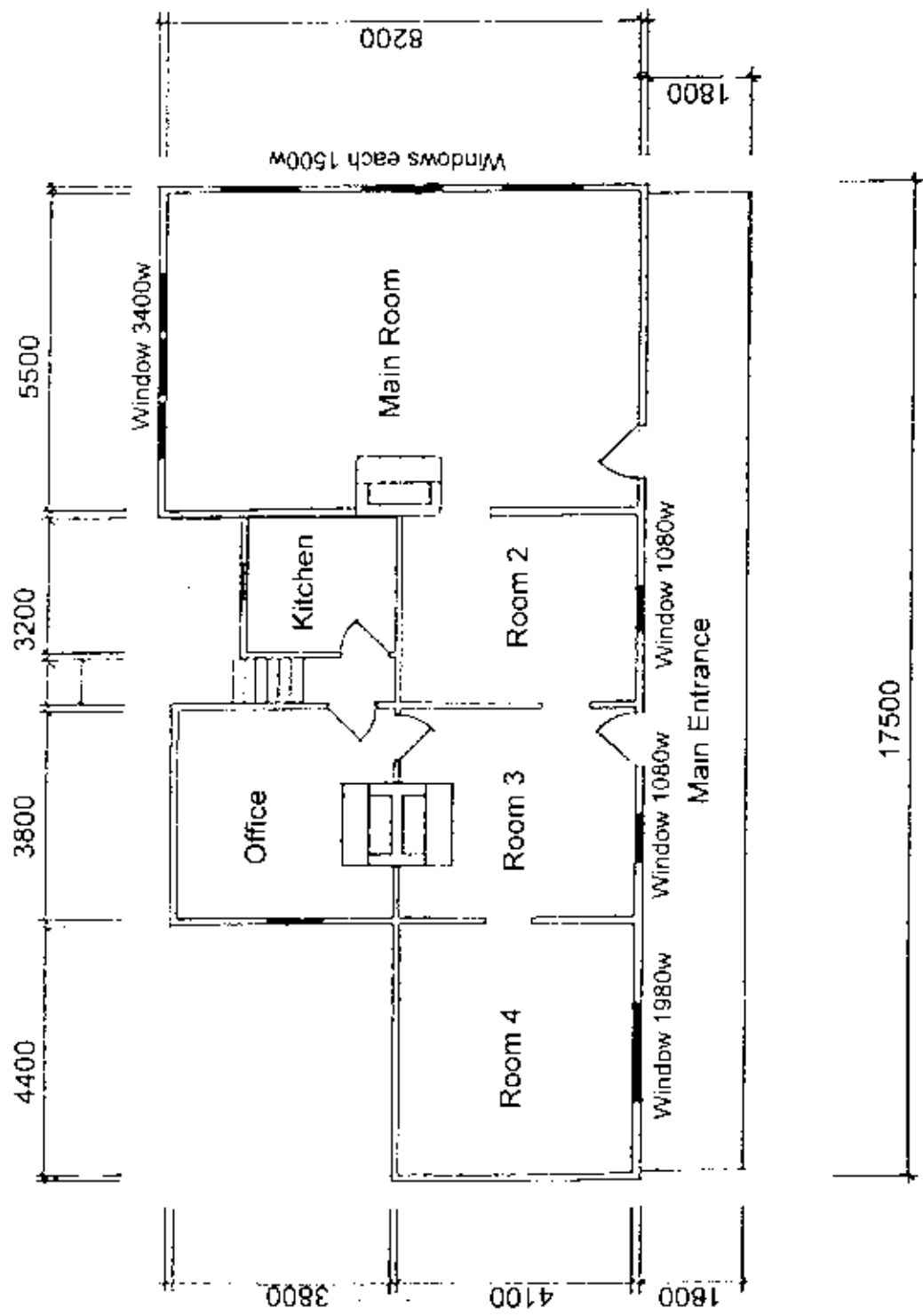
Plinths

- 2 Cubes 600mm x 600mm x 600mm
- 5 squat plinths H800mm x 600mm x 600mm
(3 x 200mm high to clear acrylic covers available)
(2 x 500mm high clear acrylic covers available)

- 8 Tall plinths H1200mm x 400mm x 400mm
(6 x 200mm clear acrylic covers available)

- 1 Small H600mm x 300mm x 300mm
- 1 Small H450mm x 300mm x 300mm
- 1 Small H1000mm x 300mm x 300mm

- 1 Flat H380 x W1200 x W1200
- 5 Flat H80 x W1200 x W1200
- 5 Flat H80 x W2400 x W1200



Schoolhouse Gallery